

# ELASTIC AND LONG-LASTING FLOORS FOR HORSES



REGUPOL stable tiles, paddock mats and other floor surfaces for species-appropriate horse keeping.



Where do you stand on equestrian flooring?  
On **REGUPOL!**

**That's because our permanently elastic, long-lasting floorings are soft, insulating and slip resistant, providing a first-class surface for horses that guarantees a secure footing, a safe and even surface and absolute quietness under foot.**

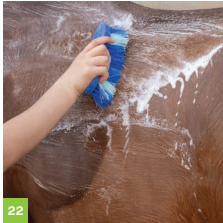
Horses that walk, stand or lie on **REGUPOL** are more relaxed and enjoy greater well-being, as injuries, inflammations and strain on tendons and feet are reduced. These surfaces are much gentler on hooves and prevent them being worn down on unshod horses.

For over 40 years, equestrian floors from **REGUPOL** have been the ideal solution for species-appropriate, cleaner and more economical horse keeping. Our floorings are suitable for use inside stables as well as for outdoor surfaces; they are weather-resistant and long-lasting. You save on bedding in horse boxes and need no footing at all in paddocks. And our **REGUPOL equestrian floors** also score highly thanks to their outstanding cleaning properties.

When it comes to equestrian floors, make sure you pick the winner - with **REGUPOL!**

**We've got it covered.**

## THIS IS WHAT YOU CAN FIND IN THE BROCHURE



**06** **REGUPOL equestrian floors in numbers**  
All important facts and figures to do with equestrian floors.

**08** **Applications**  
Find the right floor for your boxes, paddocks and more.

**32** **Colours**  
Our **REGUPOL equestrian floors** are available in a range of different colours.

**38** **Accessories**  
Installation and bonding of your equestrian floor made easy - with these products.

**42** **Service, Quality and Sustainability**  
Our quality, our services and our efforts to achieve sustainability.

**46** **REGUPOL Group**  
Who's behind **REGUPOL**? Find out more about our company and all our overseas branches.

## REGUPOL EQUESTRIAN FLOORS IN NUMBERS

At least **8**

of the areas in your equestrian facility can be fitted with our floors.

Up to **75 %**

of your normally required bedding can be saved by using our REGUPOL equestrian floors.

Over **40**

years' experience in manufacturing floors for more species-appropriate, cleaner and more economical horse keeping.

Over **80 %**

recycled content: as a rule, our REGUPOL equestrian floors consist of over 80% recycled raw materials and have been awarded the label "Top Recycling Product" by the New Life initiative. The percentage can vary from product to product.

### Your benefit:

Profit from our long-standing experience in the production of high-quality flooring for horse keeping facilities. We will help you to select the right floor for your application.



INDOORS OR OUTDOORS:  
**WE HAVE THE RIGHT FLOOR  
 FOR YOUR HORSE**

Choose your application area:

- A** Riding arena
- B** Open stall
- C** Paddock
- D** Equine clinic
- E** Wash bay
- F** Box
- G** Stable aisle
- H** Horse walker



**More technical information:**

Find out more about our **REGUPOL** equestrian floors at [www.regupol.com.au](http://www.regupol.com.au) or just ask us directly.  
[industrysales@regupol.com.au](mailto:industrysales@regupol.com.au) | phone +612 4624 0050

Private stable, large equestrian facility or medical centre: whatever you have, we have the right flooring.

To give horses a feeling of all round well-being, we have the appropriate floor for almost all areas in horse keeping. We will also help you to find the right **REGUPOL equestrian floor** for your specific needs. Thanks to our extensive product range, we can cater specifically for your individual project. Here you can find the different applications our **REGUPOL equestrian floors** can be used for.

**REGUPOL equestrian floors** – elastic, low-maintenance and economical

Indoors or outdoors: our **REGUPOL equestrian floors** easily withstand the stresses and strains caused by horses and the weather. Once installed, our **REGUPOL** floorings create an elastic, slip-resistant surface in stalls, paddocks, wash bays and where else a resilient floor is needed.



#### Easy installation

Our **REGUPOL equestrian floors** are quite easy to lay yourself. Instructions and tips on sub-bases can be obtained from **REGUPOL Australia**.

## OUR FLOORS FOR BOXES

### A secure footing:

Wherever horses need to rest and feel comfortable, the floor surface plays a significant role. For boxes, our elastic REGUPOL floors are the ideal choice. They are soft, slip-resistant and shock absorbing, provide a comfortable footing and at the same time reduce the strain on your horses' joints.

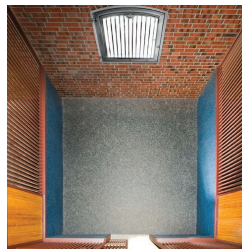
Attached horizontally to the box walls, our elastic REGUPOL products protect agitated horses that kick out from injuring themselves. We can supply water permeable but also virtually water tight flooring for your boxes: the choice is yours. All our REGUPOL floors enable you to significantly reduce bedding and improve the climate in the box. They are so easy to clean, you'll be able to spend much more time with your horses.

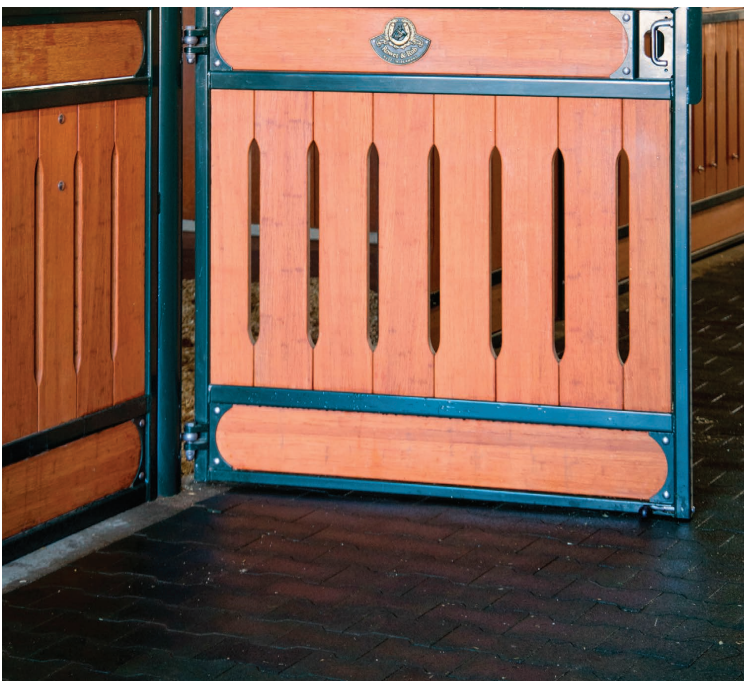


**Tiles**  
Gentle on hooves and joints | long-lasting | water permeable | sound absorbing  
**Our products:** REGUPOL equiline stable, REGUPOL equiline multi, REGUPOL equiline multi XL



**Rolls**  
Low installation height | virtually water tight | highly resilient  
**Our products:** REGUPOL equiline aussie gold





# OUR FLOORS FOR STABLE AISLES

### Sound absorbing:

The floor in a stable aisle has to withstand the daily battering from horses' hooves and guarantee peace and quiet for the animals themselves. Our REGUPOL stable aisle floors meet these and many more demands. They are hard-wearing, slip-resistant and secure under foot – even when it's wet and damp.

The elastic material in our robust REGUPOL floor surfaces is sound absorbing and generates a pleasant acoustic atmosphere, in stark contrast to the clattering of hooves on concrete floors. This guarantees that horses in their boxes are much less likely to be disturbed.



**Tiles**  
Gentle on hooves and joints | long-lasting | water permeable | sound absorbing  
**Our products:** REGUPOL equiline stable, REGUPOL equiline multi, REGUPOL equiline multi XL



**Moulded elastic parts**  
elastic | robust | easy to lay | sound absorbing  
**Our product:** REGUPOL equiline walkway



**Rolls**  
Low installation height | virtually water tight | highly resilient  
**Our products:** REGUPOL equiline aussie gold

**Our tip:**  
REGUPOL interlocking pavers can be laid just like conventional paving stones. This reduces installation time.

# OUR FLOORS FOR OPEN STALLS

Weather resistant:

Whether hot sunshine, rain or snow: REGUPOL equestrian floors can withstand the elements in open stalls all the year round.

Basic cleaning is also quick and easy with no complications. On our REGUPOL floors, horses in open stalls no longer need to wade through mud. REGUPOL paves the way for clean and safe walkways from Spring to Winter throughout the entire facility.



**Tiles**  
Gentle on hooves and joints | long-lasting | water permeable | sound absorbing  
**Our products:** REGUPOL equiline stable, REGUPOL equiline multi, REGUPOL equiline multi XL



**Moulded elastic parts**  
elastic | robust | easy to lay | sound absorbing  
**Our product:** REGUPOL equiline walkway



**Rolls**  
Low installation height | virtually water tight | highly resilient  
**Our products:** REGUPOL equiline aussie gold

**Our tip:**  
Simply paving the main walkways and the areas around hayracks and drinking troughs makes life easier for your animals, putting them on a clean and safe footing.





**Easy to clean**

Our **REGUPOL equestrian floors** are hygienic, low-maintenance and easy to clean. Dirt and other objects remain visible on the surface, where they can be cleared up and removed immediately. Our floors can easily be swept clean with a broom and, as a supplement, occasionally given a thorough cleaning with a pressure washer.

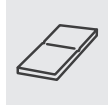


# OUR FLOORS FOR PADDOCKS

## Comfort:

A paddock floor is a heavy use area all the year round. Even in cold and wet weather, REGUPOL floors provide safety and comfort in your paddock. Wherever loose or natural substrate quickly reach their limits, REGUPOL creates paddock floors that can meet the needs of both horse and owner, whatever the weather.

In outdoor areas, too, our floor surfaces are safe under foot and resistant to weather. A further benefit is that you need no additional footing, which considerably eases the workload when it comes to mucking out your paddock. Unpaved and muddy paddocks are finally a thing of the past.



**Tiles**  
Gentle on hooves and joints | long-lasting | water permeable | sound absorbing  
**Our products:** REGUPOL equiline stable, REGUPOL equiline multi, REGUPOL equiline multi XL



**Moulded elastic parts**  
elastic | robust | easy to lay | sound absorbing  
**Our product:** REGUPOL equiline walkway

## OUR FLOORS FOR WASH BAYS

Slip-resistant:

REGUPOL can supply you with the most suitable floor surfaces for your wash bay and your outdoor wash areas. Whatever product you choose, all our REGUPOL wash area floors have one thing in common: they are elastic and slip-resistant, providing good underfoot stability. Depending on the product selected, water can drain off quickly and easily.

Or you may prefer our elastic floor surface which is installed with adhesive over the entire area and allows virtually no water to seep through. These products are also a good choice for the walls in the wash bay, as they provide protection from injury for nervous horses that may kick out. A further benefit of our floor surfaces, particularly when used in wet areas, is their excellent slip-resistance - to make sure that washing becomes a real pleasure.



**Tiles**  
Gentle on hooves and joints | long-lasting | water permeable | sound absorbing  
**Our products:** REGUPOL equiline stable, REGUPOL equiline multi, REGUPOL equiline multi XL



**Moulded elastic parts**  
elastic | robust | easy to lay | sound absorbing  
**Our product:** REGUPOL equiline walkway



**Rolls**  
Low installation height | virtually water tight | highly resilient  
**Our products:** REGUPOL equiline aussie gold





# OUR FLOORS FOR HORSE WALKERS

Stable:

When exercising horses in your horse walker, the floor is constantly subject to heavy loads. Our REGUPOL floors provide the underfoot stability that your horses need – even in the rain. Circular or oval installation poses no problems at all.

The elastic material ensures that movement remains a source of pleasure and eases the strain on hooves and joints. Any dirt or manure remain visible on the surface of our REGUPOL floors and can be easily cleared away. Lap after lap, our floor surfaces will keep your horses on a stable footing.



**Moulded elastic parts**  
safe | elastic | robust | easy to lay | sound absorbing  
**Our products:**  
REGUPOL equiline walkway



**Rolls**  
Low installation height | virtually water tight | highly resilient  
**Our products:**  
REGUPOL equiline aussie gold



**Acoustics**

Our **REGUPOL equestrian floors** are sound absorbing. Their elasticity effectively dampens the noise of hooves, eases the strain on joints and tendons and provides the horses with a surface which is slip-resistant and stable under foot.

# OUR FLOORS FOR EQUINE CLINICS

## Hygienic:

In treatment rooms, operating theatres, recovery boxes, walkways and any other rooms in equine clinics where horses are treated and cared for, our REGUPOL floorings provide protection for these animals. They are elastic, extremely robust and available in a range of different versions for different applications.

Thanks to their special surface, our REGUPOL floors score highly in terms of hygiene. At the same time, REGUPOL surfaces provide a solid base for the animals to stand on. For places where agitated horses may well kick out, REGUPOL can also supply you with suitable protective wall coverings. Getting horses back on their feet again is best done on REGUPOL.



**Rolls**  
Low installation height | virtually water tight | highly resilient  
**Our products: REGUPOL equiline aussie gold**



**Indoor systems**  
hygienic | robust | protective | seamless  
**Our product: REGUPOL equiline VET**





## OUR PRODUCT FOR RIDING ARENAS

### Safe borders:

Riding arenas are surrounded by borders to keep the footing materials in place, regardless of the type used. At the same time, however, these borders form kerbs and edges that can be a source of injury to both horse and rider.

For increased safety around riding arenas, we have our **REGUPOL** riding arena edging elements. They provide that little bit of extra elasticity, in case the horse gets too close to the arena edges or the rider takes a tumble in the surrounds. If you need any help planning your riding arena, just contact us and we'll be happy to recommend professional suppliers who can provide you with the best possible support for your planning.



#### Moulded elastic parts

elastic | robust | easy to lay | sound absorbing  
Our product: **REGUPOL equiline walkway**

# COLOURS

## FOR REGUPOL EQUESTRIAN FLOORS



### Tiles

You have a choice of three colours: besides classical terracotta, all our **REGUPOL equestrian floors** in tile form are also available in black or grey.



### Moulded elastic pavers

Our moulded elastic pavers for safe and clean horse keeping are available in three different colours.



### Rolls

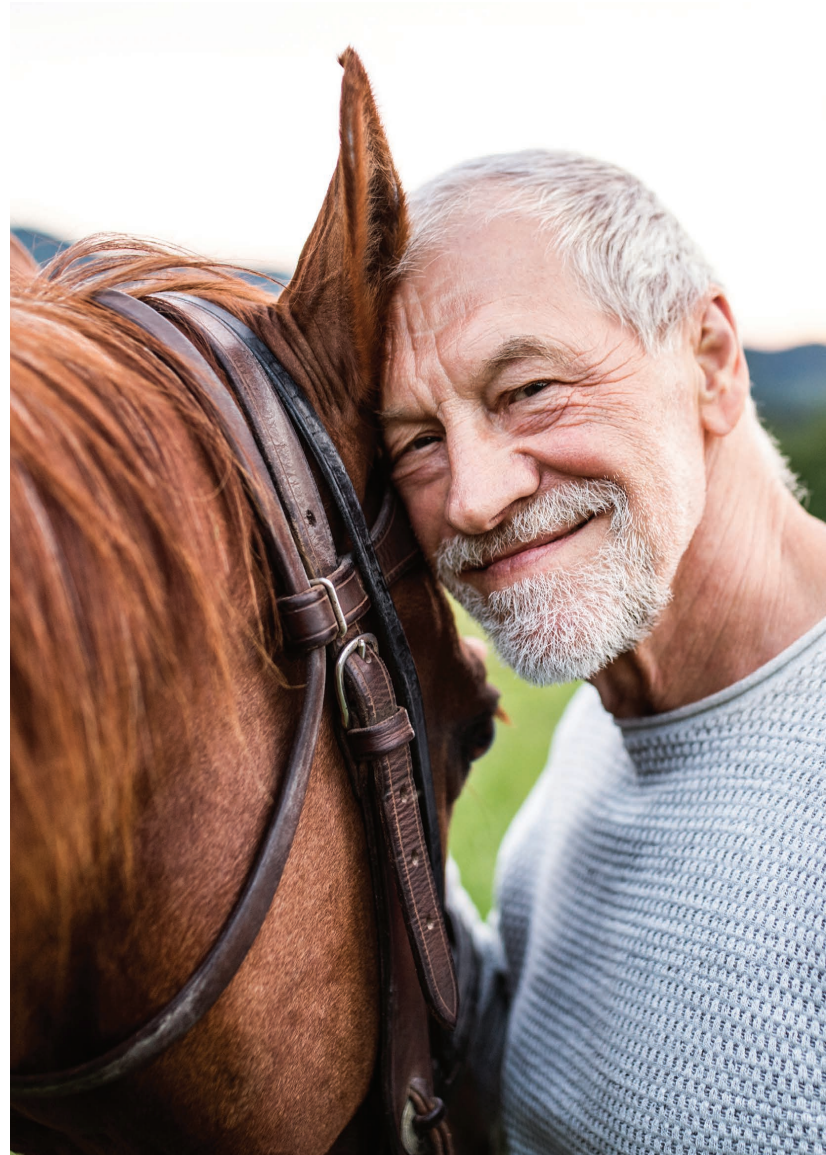
The elastic **REGUPOL** rolls for equestrian floors has a natural design that enables them to blend harmoniously into the general stable and paddock environment.



### Indoor systems

For our multi-layer floors with their seamless PUR wear layer, you can choose from several colours to design the floor surface you want. This surface type is characterised by its outstanding hygienic qualities and high wear resistance.

We'll be happy to send you samples of our **REGUPOL equestrian floors**. Don't hesitate to contact us: [industriesales@regupol.com.au](mailto:industriesales@regupol.com.au) | phone +61 2 4624 0050

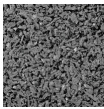


# TILES & MOULDED ELASTIC PARTS

## COLOURS



Black

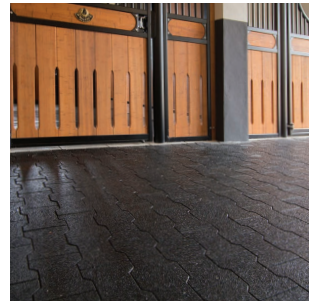


Grey



Terracotta

Further colours available. Feel free to contact us: [industrysales@regupol.com.au](mailto:industrysales@regupol.com.au) | phone +61 2 4624 0050



Deviations from the colours shown are possible due to production batches and brochure print.



# INDOOR SYSTEMS COLOURS



Tourquoise Mint [407] Green Oxide [400] May Green [417] Lime Green [401]



Pigeon Blue [308] Pastel Blue [307] Sky Blue [305] Steel Blue [306] Capri Blue [309]

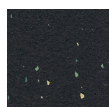


Sand Beige [205] Yellow Orche [800] Autumn Brown [106] Red Oxide [100]



Iron Grey [507] Dusty Grey [506] Stone Grey [504]

# ROLLS COLOUR



Aussie Gold - Black, Green and Yellow

Deviations from the colours shown are possible due to production batches and brochure print.

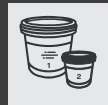
# ACCESSORIES

## FOR REGUPOL EQUESTRIAN FLOORS



### One-component PUR adhesive sealant

For some of our **REGUPOL equestrian floors**, we recommend bonding the product to the sub-base or bonding the products together. To enable you to do so, we can supply the appropriate adhesive in a practical cartridge and pot for easy application.



### Two-component PUR adhesive

Our rolls of **REGUPOL equiline aussie gold** are bonded with adhesive spread over the entire area of the sub-base. The appropriate adhesive and instructions for use can of course be obtained from us.



### Plug-in dowel system

Our plug-in dowels are available to connect some of the **REGUPOL equiline multi** tiles together. The tiles have pre-drilled holes at the sides and are fixed together by means of the plastic dowels. This system makes it easier to lay the tiles precisely, and stops them from slipping out of position.

### By the way:

Further documentation on applying the adhesive and installing our **REGUPOL equestrian floors** is available on our website at [sports.regupo.com.au](https://sports.regupo.com.au). Or simply contact us directly. We'll be happy to help.  
[industrysales@regupo.com.au](mailto:industrysales@regupo.com.au) |  
phone +61 2 4624 0050



**Whatever you need for REGUPOL  
equestrian floors**

Contact us for any additional products you need  
for your **REGUPOL equestrian floors**. We can supply  
you with ramp edges in the same elastic **REGUPOL**  
material all our equestrian floors are made of.





# HOW ARE SOLUTIONS EASY AND INSPIRING? **TOGETHER.**

**We've got it covered.**

**REGUPOL** is more than sports and multi-purpose surfaces. More than our acoustic underlayments. And more than our state-of-the-art track and field surfaces. For over 65 years, providing solutions and delivering exceptional customer service has been our business. We understand that paying attention to the details is critical from the start of any project. Making changes later means inconvenience and additional expenses. We sweat those details so you don't have to.

Because we invented the technology to recycle end of life tyres into unique products, you benefit from decades of experience and expertise that only we can offer. That means the right information, advice, and answers when you need them, along with products that have been refined, tested, and retested over the years by our R&D team to deliver precision performance that will not disappoint. It is all accomplished with manufacturing that meets the highest quality standards with the strictest environmental requirements.

**Delivering results, developing leaders worldwide**

We have grown steadily since 1954 – new products developed, new subsidiaries established and new locations added.

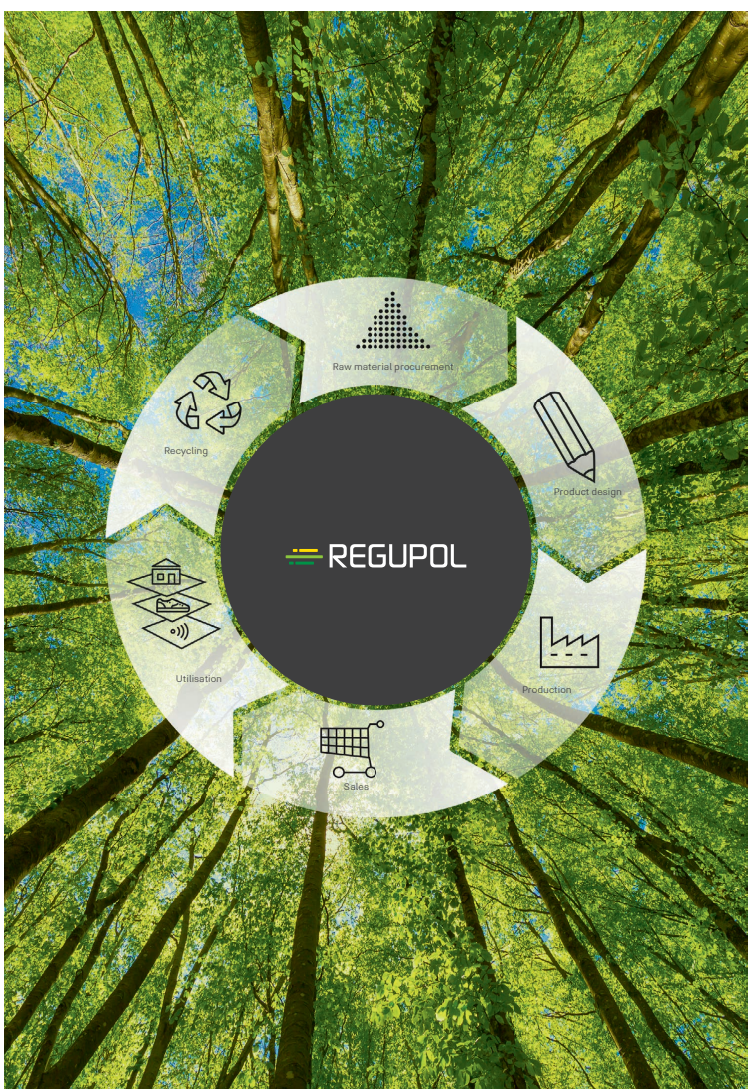
Today, **REGUPOL** is still a family enterprise, with third and fourth generations currently working in company management. We have eleven offices in seven countries, all serving as epicentres for innovation, ingenuity, and community.

Behind every **REGUPOL** product, there is a talented team that works together, across the globe, to create performance solutions from reclaimed materials that deliver durability and protection where you need it most without sacrificing sustainability. Whether used to protect surfaces and optimize load transport or to dampen sound and vibration, **REGUPOL** gets it done. We deliver with a level of product, customer service, and investment that only the inventor can offer.

No matter the customer—we aim to make their experience easy and inspiring, at an only-at-**REGUPOL** value.



Ask the experts about the best solution for your project.  
**REGUPOL Australia** 02 4624 0050  
industriesales@regupol.com.au



## HOW DO YOU BECOME MORE ENVIRONMENTALLY FRIENDLY? TOGETHER.

**Caring about the environment is part of the REGUPOL core mission. When it comes to how we conduct our business and develop our products, we think long term. We ask ourselves: How will our actions today impact tomorrow's world? We strive to protect and sustain our environment every step of the way, from development and production to customer use and disposal.**

On the road, tyres eventually wear down or sustain irreparable damage. But, in the environment, tyres can last forever. They are nonbiodegradable, unable to be compacted like plastic or metal, and maintain their shape. Because of their sheer size and impenetrable rubber compound, tyres are among the most problematic sources of waste we face today.

In the 1950s, polyurethane foam was new and very expensive. Instead of using all of the material produced, a considerable quantity was disposed. Our company was founded in 1954 to reprocess this wasted material into composite foam. Recycling is in our DNA.

**How sustainable are REGUPOL products?**  
The circular economy works when recycled products compete directly with new products – we have been proving this for 65 years. **REGUPOL** products are typically made from 75% to 95% recycled materials, as are our sports mats. However **REGUFOAM** products are made from genuine raw materials.

**What standards and legal requirements does REGUPOL meet?**  
Our company has been fully DIN EN 14001 certified since 1997 and will remain so. In addition, our products and mats comply with paragraph § 45 II No. 2 of the German draft bill on recycling management. We hope that the clearly formulated regulation will help make government action more sustainable.



**What is sustainable about our human resources policy?**  
All our staff in Germany are paid according to a chemical industry-wide collective agreement. We are a recognised provider of insulation solutions and attach particular importance on training, which is why a large number of trainees undergo their training in-house.

**New Life: From the disposing to a recycling economy**  
**REGUPOL** is a founding member of the "Initiative NEW LIFE" and commits to an optimal recycling economy, together with the other member corporations. Jointly, the members want to point out the advantages of recycling products from ELT (End-of-Life-Tires) and motivate to act sustainably. More about the initiative: [www.initiative-new-life.de](http://www.initiative-new-life.de)

**What is next?**  
We still have a lot to do. We look forward to the continued development to our take-back policies for our products and reprocessing them. This will significantly extend the useful life of our products and consume far fewer natural resources. Accompany us.

**REGUPOL's CO<sub>2</sub> balance sheet**  
In 2016, we partnered with the NRW Efficiency Agency to create a CO<sub>2</sub> location balance sheet, showing our total greenhouse gas emissions as CO<sub>2</sub> equivalents. We are on the right track.



## HOW DO YOU GET TO THE TOP? **TOGETHER.**

When you partner with REGUPOL, you become part of a community with a shared goal of leading with excellence and innovation. Our path to success has always been rooted in product innovation and great service, with an eye on the future. We transform over 90,000 tons of high-quality recycled materials every year to create products that meet and exceed industry standards.

Over the course of our 65-year journey to become a leader in our category of building materials, we have built up a wealth of expertise and forged long-term customer partnerships in 132 countries worldwide—like sprint legend Usain Bolt, who made history on our blue REGUPOL running track in Berlin's Olympic Stadium in 2009 when he set two world records.

**"There's nothing like running on REGUPOL. To me, REGUPOL equals gold. In more ways than one." - Usain Bolt**

We've got it covered.

**700** employees

**11** locations worldwide

**90,000** tons of high-quality recycled materials per year

**132** countries with satisfied customers





**REGUPOL Australia Pty. Ltd.**

155 Smeaton Grange Road  
Smeaton Grange NSW 2567  
phone +61 2 4624 0050  
industriesales@regupol.com.au

**REGUPOL Germany GmbH & Co. KG**

**REGUPOL America LLC**

**REGUPOL Acoustics Middle East FZE**

**REGUPOL Schweiz AG**

**REGUPOL Zebra Athletics LLC**

**BSW Shanghai CO. LTD.**

[www.regupol.com.au](http://www.regupol.com.au)